

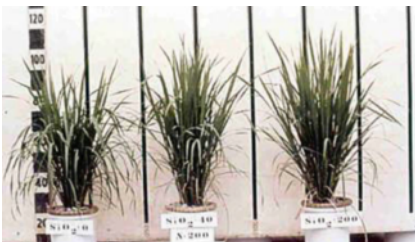
Novelgro SILIKA

Non pesticide plant protection

Novelgro SILIKA, is absorbed through plant leaves, skin, and roots. And systematically form a hard cell wall to protect plant against pest, disease and drought.

- DOSAGE: 2 liters / HA / application
- RICE: Mix 10 cc to 1 liter of water (1%) as foliar spray solution. Spray Timing: 14, 28, 42, 56, 70 DAT (Days After Transplantation)
- Vegetables: Use 0.25% - 0.5% spray solution (2.5 cc – 5 cc / liter)
- For preventive plant protection, spray when early sign of pest and disease outbreak is observed.

SILICON HARDEN RICE PLANT LEAVES



RENDAH ↔ TINGGI



Copyright CLAUDIO GRATTON

SILIKA HARD LAYER HARDEN PLANT SKIN AND HAIR, MAKING PEST DIFFICULT TO ATTACK

WITHOUT SILIKA

PEST CAN PENETRATE EASIER

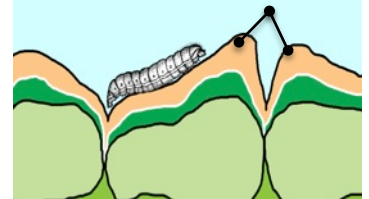


WITHOUT SILIKA, PEST CAN PENETRATE EASIER

HARD SILIKA LAYER CAUSED ABRATION OF THE STEM BORER MANDIBLE, LEADING TO PEST STARVATION AND DEATH.

WITH SILIKA

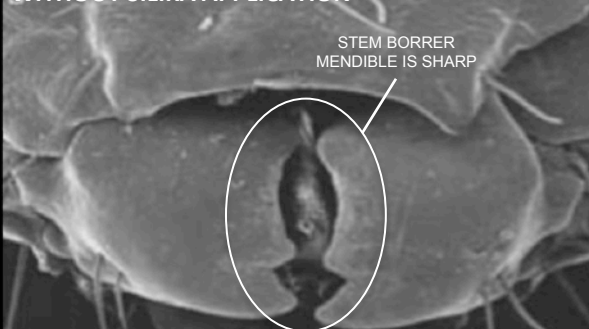
HARD SILICIOUS SKIN PROTECT PLANT FROM PEST ATTACK



SILIKA CELL LAYER BLOCKING PEST ATTACKS

WITHOUT SILIKA APPLICATION

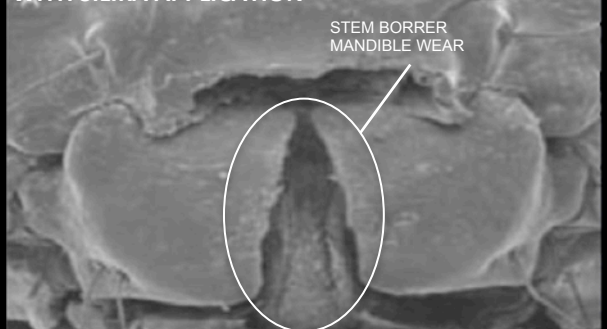
STEM BORRER MENDIBLE IS SHARP



LOW SILICON CONTENT PLANT TISSUE IS PRONE TO PEST ATTACK

WITH SILIKA APPLICATION

STEM BORRER MANDIBLE WEAR



HIGHER SILICON CONTENT PLANT TISSUE LESS PRONE TO PEST ATTACK (SOURCE: Olivia Reynold et. al., 2009)